



Inside the San Francisco Decorator Showcase 2026: Shades of Blue, English Accents, and Statement Lighting Abound

18 designers from across California brought this Victorian mansion into the 21st century

By [David Nash](#)

Photography by [Michael Clifford](#)

April 24, 2026



The entryway by AD PRO Directory designer Kendall Wilkinson offers an airy welcome into the 2026 San Francisco Decorator Showcase.

This year's San Francisco Decorator Showcase takes place in a stately Queen Anne-style house perched high on a hill in Pacific Heights with stunning views of the Golden Gate Bridge. The property looks destined to become home to the annual philanthropic project, which has raised more than \$21 million for the San Francisco University High School Financial Aid Programs. So, it may come as a surprise to learn it's the first Victorian to play host to the city's show house in its 47-year history. Originally designed in 1897 by architect Moses J. Lyon, the property's nearly 10,000 square feet of space provided a blank canvas for 18 interior and landscape firms that contributed designs.



The Queen-Anne style mansion was originally designed in 1897 by architect Moses J. Lyon.

Feeling the blues

Of the almost 30 spaces in total, there is hardly any wall or ceiling that hasn't been limewashed, lacquered, clad in Venetian plaster, wallpapered, or upholstered within an inch of its life. According to organizers, the home underwent more interior construction work (including the addition of a second staircase) than any other project in San Francisco showcase history.

Blue was a standout color in many of these spaces. The third floor game room conceived by Alyson Gay Design was one standout. Known for playfully mixing color and pattern, designer Alyson Gay took inspiration from the renaissance of mahjong to create the space, which features gemstone sconces and Nick Mele's playfully chic image, *Mahjong by Night*, mounted above the custom sofa. The walls, meanwhile, are bathed in a glossy pale blue—"our firm's signature color!"—that seems to meet the expanse of sky visible through the room's 14 (count em!) windows.



A game room called "Well Played" by Alyson Gay of [Aly Gay Design](#) Photo: Lauren Edith Andersen



The “L’Arrivée” entry and foyer by Kendall Wilkinson of [Kendall Wilkinson Design](#) Photo: Paul Dyer

Designer [Kendall Wilkinson](#)’s entryway and foyer offers an equally airy welcome in a similar palette. Having recently spent time in Paris, where she was impressed by La Galerie Dior, The AD PRO Directory designer says she reimagined the connecting spaces with a decidedly French sensibility. The walls here are limewashed in a pale blue-green, forming a vintage-feeling backdrop for the custom furnishings upholstered in Schumacher and Fabricut as well as the designer’s own modern lighting collection with Iatesta Studio. Other striking use of blue palettes in the show house include the upstairs bedroom by designer Chantal Lamberto, a cozy coastal cocoon wrapped in blue-and-white Schumacher ticking stripe, and the living room by Sindhu Peruri of [Peruri Design Studio](#), who plastered the walls and ceiling in a powdery periwinkle lifted straight from Monet’s palette. The room also pays homage to the AD PRO Directory member’s Indian roots with details like hand-cut *Thikri* work (mirror mosaic tiling) applied along the crown molding, and perforated latticework known as *Jaali*.

Fantastical fixtures



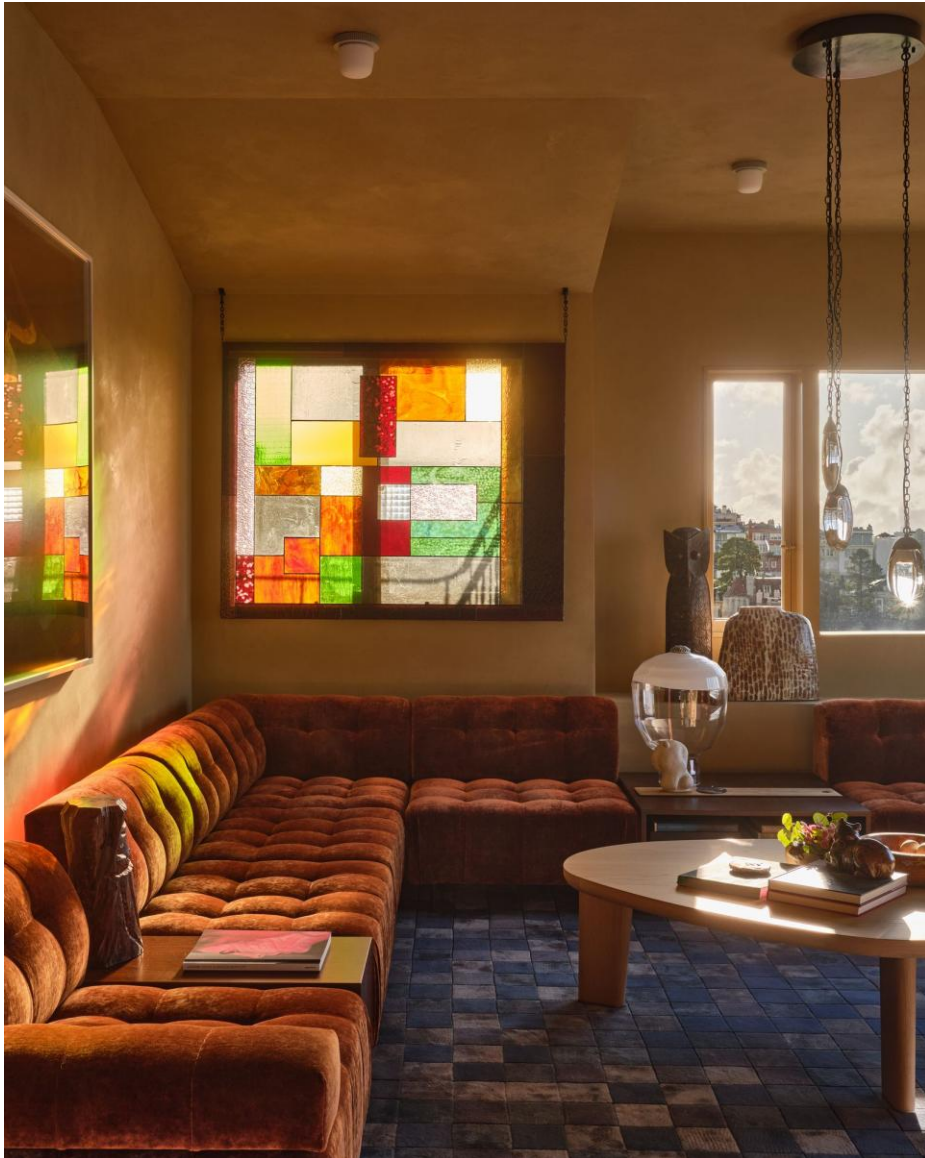
[Sindhu Peruri](#) designed a living room shaped by culture and memory. Elements range from hand-cut, mirror mosaic tiling applied to the crown molding, perforated *Jaali* latticework on the walls and cabinetry, and miniature hand-painted landscapes that adorn custom-designed stools. Small paintings inspired by 17th century Indian miniatures exude a “happy and joyful” vibe, says the designer. Photo: R. Brad Knipstein



The primary bedroom called “West | Red Bedroom” by Fernando Castellanos of [Castellanos Interiors](#)

Also of note: the otherworldly statement lighting hanging in many of the rooms. Paul Ferrante’s iron shrub decorated with porcelain flowers illuminates Lamberto’s bedroom, while Peruri chose a sinuously suspended statement chandelier from L&G Studio (shades of Frank Gehry) for her living room. An upside-down tree-style Bonsai Pendant hangs over the central table in Wilkinson’s foyer, and Fernando Castellanos selected a molten glass cylinder fixture from Hersh Design for his rosily-accented bedroom. In the living room, AD PRO Directory designer [Tineke Triggs](#) installed a Laurel Blossom 09 brass chandelier from Rosie Li Studio.

Step inside the San Francisco Decorator Showcase 2026:



The “Chapel” den by Robbie McMillan, Caleb Morris, and Marcus Keller with Everson Perez of AD PRO Directory design firm [AubreyMaxwell](#) and [Perez Construction](#)



A hall bathroom called the “Station” by Robbie McMillan, Caleb Morris, and Marcus Keller with Everson Perez of AD PRO Directory design firm [AubreyMaxwell](#) and [Perez Construction](#)
Photo: R. Brad Knipstein



Referencing the landmarked Queen Anne-style architecture, AD PRO Directory designer [Lizette Marie Bruckstein](#) says she wanted the primary bedroom to be “a place you want to spend time—not just brush your teeth and run out.” As tribute to Victorian styling, she designed floor-to-ceiling millwork, installed marble and stone slabs, and limewashed the walls.

Photo: Jose Manuel Alorda



“The Whispering Veil” powder and cloak room by Rachel Scheff of [Rachel Scheff Design Studio](#)
Photo: R. Brad Knipstein



The “Well Played, Ladies” sunroom by Alyson Gay of [Aly Gay Design](#)
Photo: Lauren Edith Andersen



The "Study Abroad" office by Briana Tunison and Matt Bissinger of [Maker & Moss](#)
Advertisement



The “Double Standard” bedroom by Jeffrey Neve of [Jeffrey Neve Interior Design](#).
Photo: R. Brad Knipstein



A “Jack & Jill” bathroom by Jeffrey Neve of [Jeffrey Neve Interior Design](#)
Photo: R. Brad Knipstein



“The Slow Spin” laundry room by Kimberley Harrison of AD PRO Directory firm [Kimberley Harrison Interiors](#)

Photo: R. Brad Knipstein



The dining room called "A Gated Space" by Stephanie Marsh Fillbrandt of [Marsh & Clark Design](#)



The “Delft Dreams” bedroom with a corner fireplace by Chantal Lamberto of [Chantal Lamberto Interior Design](#)



A bedroom inspired by “A New York Minute” by Alexander Nikban of AD PRO Directory firm [Studio Alexander](#)



“A Bay View Retreat” en suite by Alexander Nikban of AD PRO Directory firm [Studio Alexander](#)



First-time Showcase designer Andrea Halkovich of [Sonoma Interiors](#) tapped into the Victorian era for this bedroom, where House of Hackney's "Zeus" wallpaper served as the initial inspiration for the overall design. Creamy drapes, golden mirrors and lighting fixtures further the romantic vibe.



The primary dressing room called “West | Red Dressing Room” by Fernando Castellanos of [Castellanos Interiors](#)



[Jeanne Renee](#)'s bedroom could be the love child of Gloria Vanderbilt's famous patchwork-and-upholstered 1960s New York City townhouse and Lee Radziwill's stately London drawing room.



Styled after English 18th and 19th century bakehouses, AD PRO Directory designer [Tineke Triggs](#) installed hand-crafted cabinetry throughout, as well as marble countertops and a golden-veined backsplash.



“This room needed to feel like its own cozy space,” [Triggs](#) says of her gathering spot next to the kitchen, inspired by old English hunting lodges. “It’s a modern twist on a family room where no animals were hurt!” The walls are clad in Fromental’s gold-gilded Faisans Doré paper depicting flocks of pheasants embellished with hand-foiled details. A vintage Vico Magistretti Maralunga sofa in velvet mohair stands next to a pair of vintage Brunati armchairs, as well as a custom PeñaMade credenza in dark walnut.

Advertisement



The rear garden by Russell Martinelli & Sami Burton of [Martinelli Design](#) Photo: Paul Dyer